

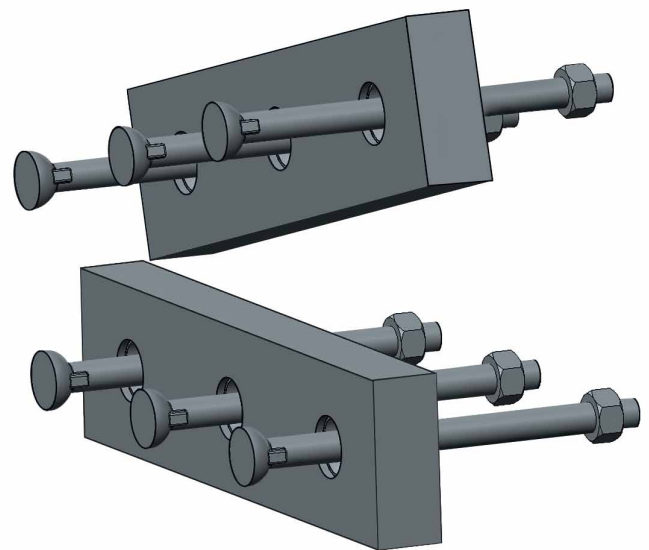


**These newly developed, highly wear-resistant cast shear blades extend the range of products provided by SWB to the scrap recycling industry.**

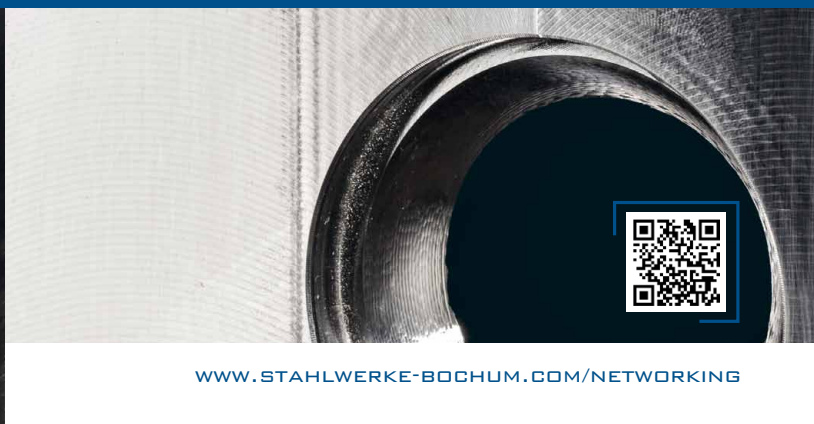
These blades offer the essential product benefit that they exhibit uniform mechanical-technological material properties in all load directions, which is due to the casting process. Apart from this, SWB scrap shear blades have other remarkable product benefits.

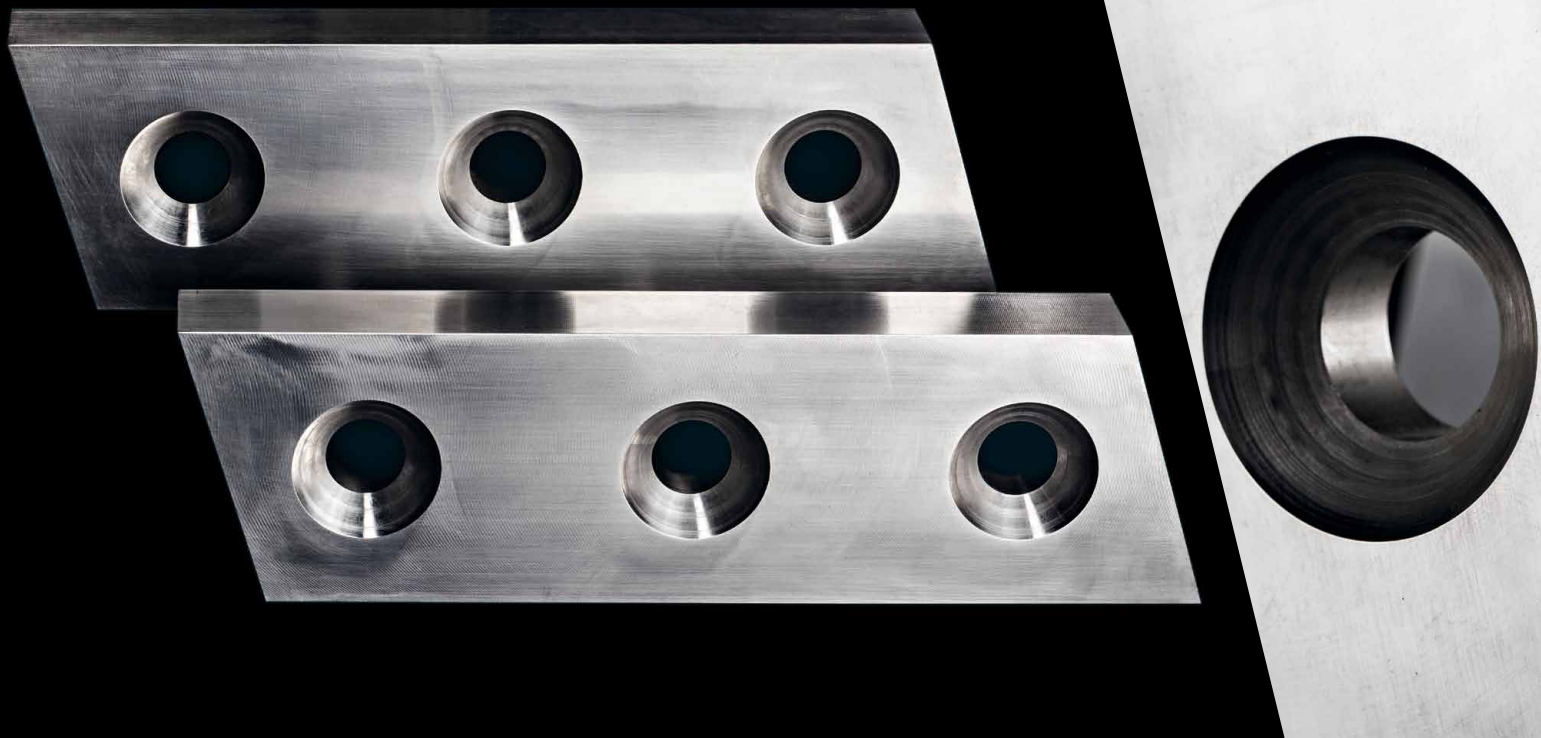
### **BENEFITS**

- The scrap shear blades are delivered ready to fit; optionally as a mounting kit including the mounting material.
- SWB scrap shear blades have proved their worth in field tests under the toughest conditions.
- Their optimal balance between hardness and toughness offers a maximum service life combined with an ultimate break resistance.
- With our variable heat treatment processes, we can customize the mechanical-technological properties of the blades to match the intended usage profile.
- As with all our products, you can count on the renowned and proven SWB quality of our scrap shear blades.



## SCRAP SHEAR BLADES





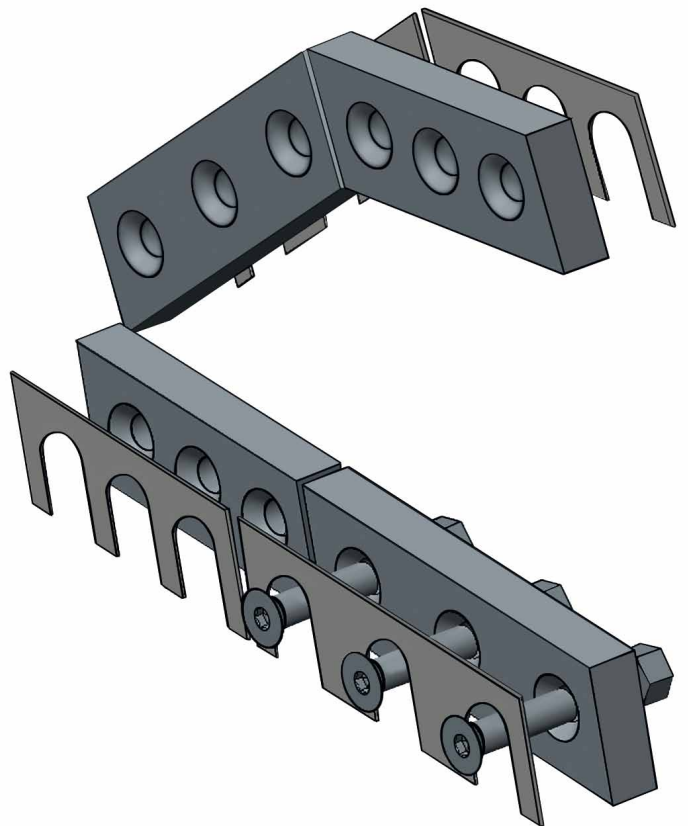
## EXCAVATOR SHEAR BLADES

The newly developed excavator shear blades complement the product portfolio of highly wear resistant cast tools „made by SWB“.

The microstructure of the steel castings with its uniform mechanical-technological material properties in all load directions is an essential product benefit in view of the tough usage conditions of the blades, including changing loads. Additional key product benefits exist.

### BENEFITS

- The excavator shear blades in our product range are ready to fit when delivered.
- Extensive field tests under the toughest conditions have proved the superior quality of the SWB excavator shear blades.
- Their optimal balance between hardness and toughness offers a maximum service life combined with an ultimate break resistance.
- With our variable heat treatment processes, we customize the mechanical-technological properties of our excavator shear blades to optimally match the intended usage.
- As all our products do, our highly wear-resistant cast excavator blades possess the renowned and proven SWB quality.



### Stahlwerke Bochum GmbH

Castroper Str. 228 • 44791 Bochum • Germany

Phone +49(0)234-508-2 • Fax +49(0)234-508-51037

sales@stahlwerke-bochum.com • www.stahlwerke-bochum.com

